



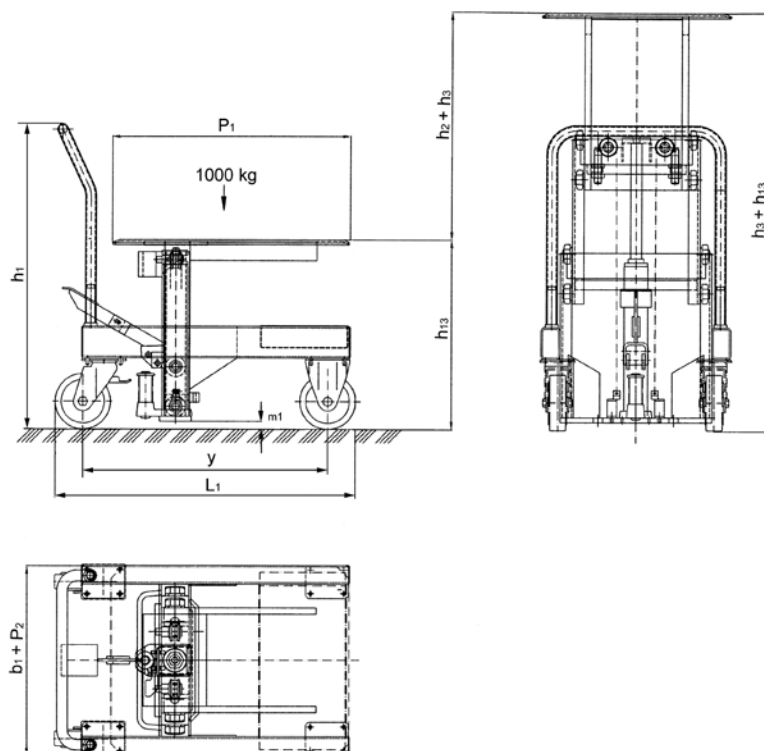
Mobile elevating work bench model HW

Capacity 1000 kg,
platform height max. 1320 mm

For lifting and transporting of heavy loads in manufacturing and assembly processes.

Features

- Hydraulic lifting and lowering of the load with foot pedal.
- Lowering speed can be finely adjusted for sensitive lowering of the load.
- Ergonomic handlebar for easy operation.
- Steering roller with locking device for safe parking of the hand stacker.
- Robust construction with hard chromium plated piston and pressure relief valve.



Technical data model HW 10

Model	HW 10
Art.-No.	040007617
Capacity, kg	1000
Platform height max. h_3+h_{13} , mm	1320
Platform height min. h_{13} , mm	600
Overall height h_1 , mm	950
Free lift h_2 , mm	720
Stroke h_3 , mm	720
Overall length L_1 , mm	947
Platform length P_1 , mm	750
Platform width P_2 , mm	600
Overall width b_1 , mm	600
Tyre type*	PA/PA
Steering rollers, mm	175x50
Load rollers, mm	175x50
Number of wheels/load rollers	2/2
Wheelbase y , mm	772
Weight, kg	160
Ground clearance m_1 , mm	25
Lifting height per pump stroke, mm	9

*PA... Polyamide