



Single bridge suspended crane



Double bridge suspended crane



Monorail



Slewing pillar crane

## SINGLE BRIDGE SUSPENDED CRANE

- All-round goods transportation, up to 1,250 kg (optional 2,000 kg)
- For normal headroom

## DOUBLE BRIDGE SUSPENDED CRANE

- All-round goods transportation, up to 1,250 kg (optional 2,000 kg)
- For lower headroom

## MONORAIL WITH BENDS, SWITCHES AND TURNABLES

- To link workstations, up to 1,550 kg
- Flexible line routing thanks to bends
- Individual lines can be connected using slide switches and turntables

For use when ceilings have insufficient load-bearing capacity or as an addition to your suspended crane. To reduce machine set-up times and waiting times.

## SLEWING PILLAR CRANE

Up to 1,000 kg, max. rotational field 270°, jib arm length up to 5 m. Can also be supplied as a slewing articulated crane (up to 250 kg).

## SLEWING WALL CRANE

The alternative when it is not possible to erect a pillar. Installation on an existing pillar/wall. Technical data as slewing pillar crane.

## HANDY CHAIN AND TELESCOPE MODELS

Economic lifting of small loads. A valuable way of making work easier, in combination with a slewing or suspended crane. Can handle offset loads: control unit directly on the load hook.

## GIS SWITCH/TURNTABLE

- For accurate transitions between tracks
- Variants: slide switches/turntables with internal or external conductor lines

## GISKB BENDS

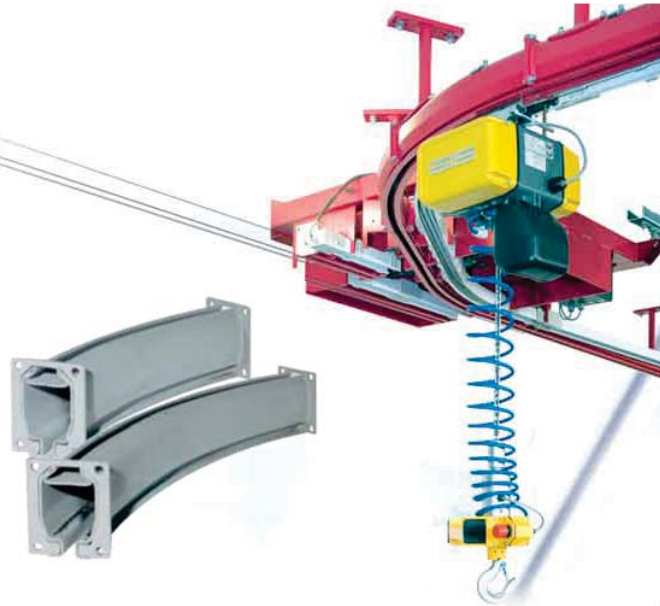
- To reach individual workstations with total accuracy
- To make optimum use of confined spaces

## LOCKING SWITCHES

- Cost-saving technology to cover partial working areas
- No need for a complete crane system
- Function: locking and traversing into a lateral monorail

## INTERNAL CONDUCTOR LINE

- The elegant alternative to trailing cables or looped wires
- Placed inside the profile (for mechanical protection)
- Ideal in confined spaces



### Benefits to you:

- Reasonably priced, thanks to series-produced standard parts and rolled profiles
- Simple to install, all components can be screwed/bolted
- Manual or electrical crane/trolley movement
- Low noise level thanks to plastic guide rollers
- Variable power supply
- Guaranteed conversion/extension of existing crane systems



## OVERVIEW OF GIS KB CRANE SYSTEM



### COMPONENTS

- Two profile sizes
- Connection plates on both ends
- Standard profile lengths ex stock, between 1 m and 8 m
- Special dimensions to order

#### Your benefits:

- Excellent performance thanks to high load-carrying capacity
- Simple to install, thanks to optimised design
- Competitively priced, thanks to standard rolled profiles

### OPTIMAL PROFILE SIZE

Use the table below to determine the optimal profile size, depending on the load P and the span W.

Basis: Max. permissible deflection =  $W/400$ , Max stress = 180 N/M<sup>2</sup>.

Lifting gear weigh: 25 kg (up to load capacity of 500 kg), 50 kg (for load capacity over 500 KG)

Load capacity	G   SKB   Span (mm)										G   SKB     Span (mm)										Load capacity
			NP 120		NP 160		NP 180		MR				NP 120		NP 160		NP 180		MR		
	▽	▽	▽	▽	▽	▽	▽	▽	▽	▽	▽	▽	▽	▽	▽	▽	▽	▽	▽		
100 kg	4,7	5,9	7,8	7,8	7,8	7,8	7,8	7,8	7,5	7,2		7,8	7,8	7,8	7,8	7,8	7,8	7,8	7,8	100 kg	
125 kg	4,4	5,6							6,9	6,9										125 kg	
160 kg	4,0	5,3							6,1	6,4	7,8									160 kg	
200 kg	3,7	4,9							5,6	6,0	7,5									200 kg	
250 kg	3,4	4,6							7,4	5,0	5,6									7,1	250 kg
320 kg	3,1	4,2							6,8	4,2	5,1									6,6	
400 kg	2,8	3,8	6,3					3,3	4,7	6,2	7,6							6,8	400 kg		
500 kg	2,5	3,5	5,5	7,5	7,5			2,9	4,3	5,7	7,1							5,8	500 kg		
630 kg	2,0	3,2	4,5	7,0	6,3		7,3	2,3	3,8	5,2	6,4							4,5	630 kg		
800 kg		2,8		6,4					3,2	4,8	5,2	7,7	7,0					3,6	800 kg		
1,000 kg		2,5		5,6		7,5			2,7	4,3	4,3	7,1	5,8		6,6			3,1	1,000 kg		
1,250 kg		2,1		4,6		6,4		7,4		2,7	3,9	3,5	6,5	4,7		5,4		2,6	1,250 kg		



With reinforcement



Without reinforcement





15









17







## SUSPENSION

### SHORT, RIGID

- The rigid suspension can only be supplied in the short version
- Reduced headroom dimension

### SHORT, PENDULATING, ADJUSTABLE

- Ball pins and nuts are screwed together directly
- Pendulation movements max. 10°
- Height adjustable by  $\pm 7.5$  mm

### DISTANCED, PENDULATING, ADJUSTABLE

- Distanced suspension, variable length
- Height differences of  $\pm 15$  mm can be adjusted out

### DISTANCED, PENDULATING, ADJUSTABLE, BRACED

- > distance 0.5 m: bracing is mandatory
- Longitudinal bracing: both ends of track
- Transverse bracing: on one side, every 2nd suspension

### LATERAL SUSPENSION

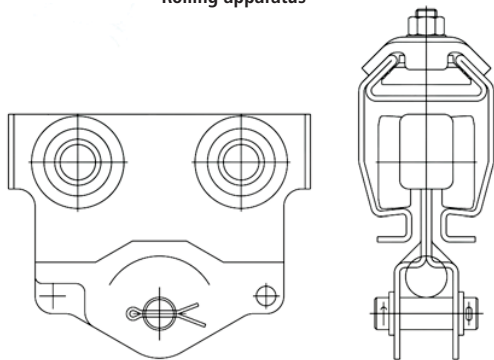
- Lateral installation on wood or concrete beam



2 trolleys with traverse



Rolling apparatus



## TROLLEYS

- Components designed in galvanized steel
- Use is guaranteed for longitudinal and transverse movements
- Load partition is ensured by 2 trolleys
- On the saddle of the double crane bridge: 4 trolleys in use
- Drive: manual or electrical

### Benefits to you:

- Silent running is maximised thanks to plastic guide rollers
- Ideal for awkward and critical loads
- Easily converted from manual to electrical operation
- Gentle start-up and braking thanks to the frequency inverter



Electrical drive



4 trolleys with saddle



Conventional conductor line



Trailing cable



C-rail

## ELECTRICS

### TYPES OF POWER SUPPLY

- 3 phase, 380/400V 50Hz
- Or to your operating electrical supply

### GISKB POWER SUPPLIES COMPLETE

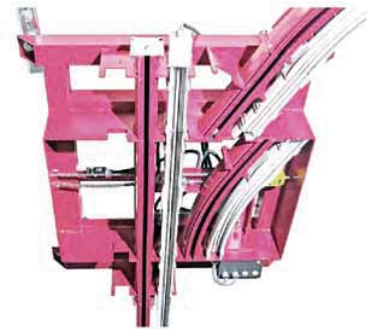
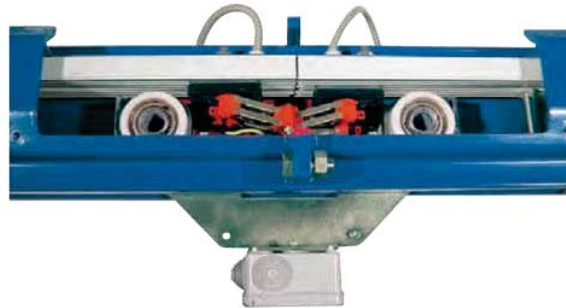
- Cable carriage, traction limit, connector, C-rail stop ...

### 4 TYPES OF LONGITUDINAL AND TRANSVERSE POWER SUPPLY:

- Trailing cable
- C-rail
- Conventional conductor line
- Conductor line inside profile

### GISKB II ST INTERNAL CONDUCTOR LINE

- Flexible, universal
- Attractive design
- For universal use
- Load: 25A with max.100 m profile length
- Trolley design as for GISKB I (up to 800 kg)



### BENDS

- Can be supplied with angles of 30° and 45°
- Radius: 1m
- End plate at both ends
- Suspension at 2 points
- Conductor line bends can be obtained with same angles as profile bends

### SLIDE SWITCHES/TURNTABLES

- Profiles are moved manually or electrically
- Manual: with traction cable
- Electrical: with 2-button control switch
- Option: supplied with conductor lines

